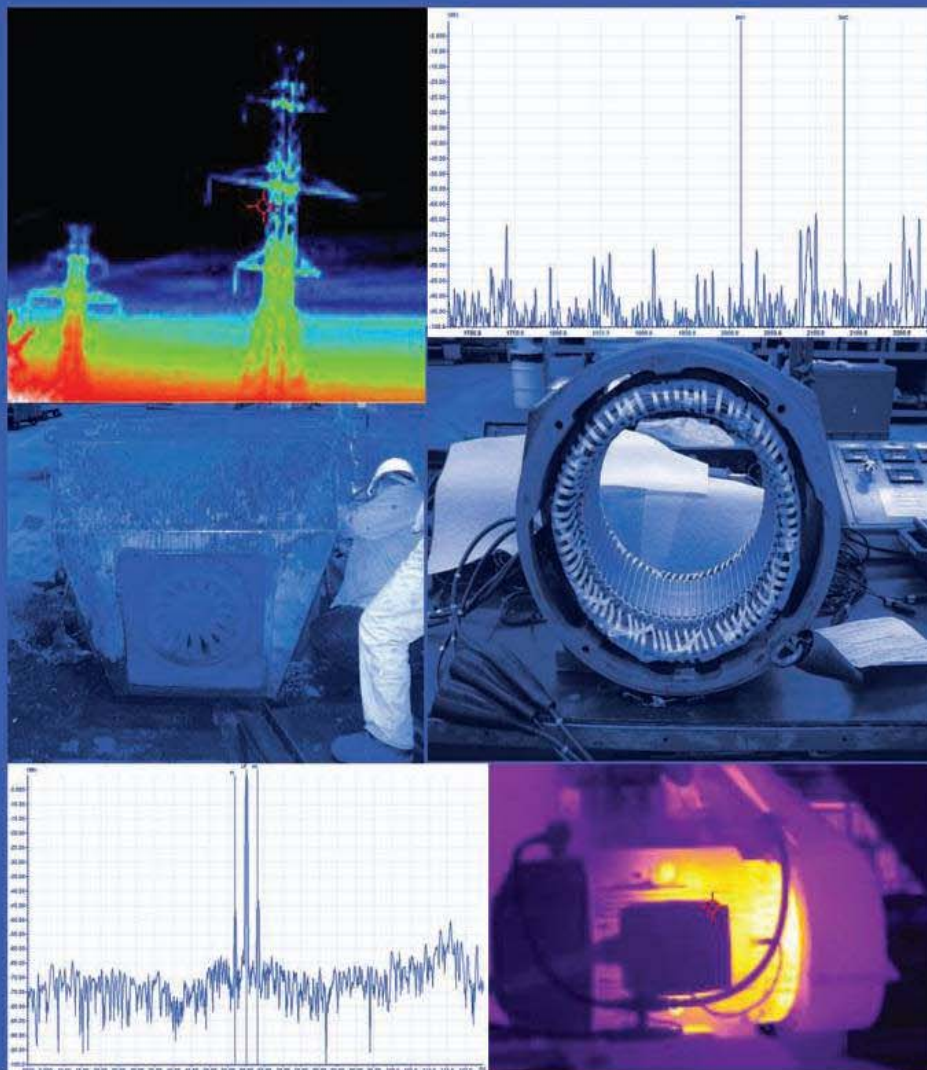


Electrical Motor Diagnostics

2nd
Edition



Howard W. Penrose, Ph.D., CMRP

Electrical Motor Diagnostics, 2nd Edition

©2008 SUCCESS by DESIGN Publishing

All Rights Reserved. No part of this book may be reproduced in any form or by any electronic or mechanical means including information storage and retrieval systems – except in the case of brief quotations embodied in critical articles or reviews – without permission in writing from its publisher, SUCCESS by DESIGN Publishing.

Published By: SUCCESS by DESIGN Publishing
Old Saybrook, CT 06475
Email: info@motordoc.com
<http://www.motordoc.com>

This publication is designed to provide accurate and authoritative information in regard to the subject matter covered. It is sold with the understanding that the use of the information contained within this book does not imply or infer warranty or guaranties in any form.

ISBN: 0-9712450-7-X
ISBN-13: 978-0-9712450-7-5

Table of Contents

Table of Figures	xiii
Table of Tables	xix
Table of Equations	xxiii
Introduction	xxvii
Chapter 1: The Motor Diagnostics and Motor Health Study.	1
Electric Motor Repair Study, 1995.	2
In Service Motor Testing, 1999	4
SUCCESS by DESIGN Best Practice Survey	6
Dealing with the State of the Motor Testing Industry	7
Chapter 2: Basic Electricity and Electro-Magnetism.	9
Current, Voltage and Resistance	10
Electro-Magnetic Fields.	11
Alternating Current Electricity	12
Chapter 2 Questions	15
Chapter 3: Electric Motor Theory	17
AC Induction Motor Theory	17
Wound Rotor Motors.	24

Synchronous Motors	25
Direct Current Electric Motors	25
Machine Tool Motors	28
Traction Motors	29
Transformers.	29
Chapter 3 Questions	35
Chapter 4: Electrical Insulation Systems and Theory	37
The Motor Circuit	37
Insulation and Magnetic Field Effects	39
Winding Faults	45
Traditional Test Methods	45
Insulation to Ground Testing (Meg-Ohm Meters)	46
Polarization Index	46
Resistance Testing	46
Surge Comparison Testing	46
Modern Low-Voltage Testing: Motor Circuit Analysis	47
Detection of Winding Contamination	48
Overheated Windings	48
Winding Shorts	49
Additional Tests	49
Rotor Testing and Back Iron Effects on MCA	50
Armature and Commutator Contamination Detection	51
Summary of MCA Theory	52
Development of Experiments	52
Test Tolerances	54



Table of Contents

v

MCA Tolerances 54

Surge Testing Tolerances 55

Experiment Test Results 55

 Experiment 1 55

 Experiment 2a 58

 Experiment 2b 59

 Experiment 2c 60

 Experiment 3 62

Experiment Conclusions 64

 Experiment 1 Conclusions 65

 Experiment 2a Conclusions 65

 Experiment 2b Conclusions 65

 Experiment 2c Conclusions 65

 Experiment 3 Conclusions 66

 Summary 66

Chapter 4 Questions 67

Chapter 5: Common Electric Motor Testing 69

 Electrical Motor Diagnostics Defined 69

 Condition-Based Technologies 70

 Voltmeter Troubleshooting of an AC Motor 73

 The Power of a Volt Meter 74

 Checking Contacts with a Volt Meter 76

 Checking Fuses with a Volt Meter 77

 Ammeter Testing of an AC Motor 77

 Analog Ammeters 77



Digital Ammeters	78
Load Measurements.	78
Current Unbalance Conditions	79
Other Current Conditions.	80
DC Resistance Testing of AC Machines	81
Selecting the Right Measurement Tool	81
Considerations When Using an Ohm Meter	85
Troubleshooting Motors With Ohm Meters	87
Classical Insulation Resistance Testing.	87
The Basic Insulation Resistance Test	88
Utilizing Hi-Pot Testing for Insulation To Ground Stress Testing	94
Evaluating Motor Condition with Low Voltage Advanced Diagnostics	95
Motor Circuit Analysis.	95
Surge Comparison Testing	102
Comparison of the 'Big Three'	104
Introduction to Electrical Signature Analysis	105
Multi-Technology Approach to CBM	111
Major Components and Failure Modes.	113
Common Approaches to Multi-Technology	117
Application Opportunities	118
Chapter 5 Questions	121
Chapter 6: Time to Failure Estimation.	123
The Tools for TTFE	123



Table of Contents

vii

The Severity Modifier	125
Understanding Series and Parallel Availability	125
Time To Failure Estimation with MCA	129
Electric Motor Winding Failure	129
Insulation Breakdown	130
Stages of Winding Failure	131
Introduction to Motor Circuit Analysis (MCA)	134
Trending Fault Descriptions	134
AC Rotating Machine Testing	136
Time to Failure Estimation	136
Nuisance Tripping Situations	137
Winding Contamination	138
Winding Shorts	139
Test Cases	141
Chapter 6 Questions	143
Chapter 7: Motor Circuit Analysis Testing AC Machines.	145
Fault Detected Procedure	146
Data Collection and Test Result Issues	146
Rotor Test Procedure	149
Synchronous Machine Testing with MCA.	150
Most Common Synchronous Motor Faults	152
Basic Steps for the Analysis of Synchronous Machines with MCA	152
Generator Analysis with MCA	153
Evaluating Generators with MCA	155





MCA Instrumentation: The ALL-TEST PRO 31 156

 Analysis of Pin-Hole Shorts
 (VFD-Related Motor Failure) 157

AC Machine Case Studies 159

 Case 1: New Motor Phase Unbalance. 159

 Case 2: Casting Void 200 HP Motor 163

 Case 3: ID Fan Motor Rebuild Defect 164

 Case 4: Cable Faults. 165

 Case 5: Evaluation of an 8000 HP Synchronous Motor . . 167

 Case 6: AC Traction Motor – Good 168

 Case 7: Spindle Motor – Good. 169

 Case 8: Brushless DC Servo – Coil-to-Coil Short 169

 Case 9: 100 Horsepower, 1800 RPM
 With Dirty Windings. 170

 Case 10: Servo Motor – Turn-to-Turn Fault 171

 Case 11: Rotor Position Related Unbalance 171

 Case 12: Motor Tested from MCC – Shorted Windings . . 172

 Case 13: Brand New 300 Horsepower Motor
 with Shorted Phase 173

 Case 14: 3000 Horsepower with Fractured Rotor Bar . . . 174

 Case 15: New 50 Horsepower, 2-pole Motor
 Combined Faults. 175

 Case 16: 300 HP, 2300 Volt, 3600 RPM
 Broken Rotor Bars 176

 Case 17: 1000 HP, 3600 RPM – Special
 Signature on Good Motor 177



P





Table of Contents

Case 18: 700 HP, 3600 RPM, Broken Rotor
Bars and Cracked Shaft 178

Chapter 7 Questions 179

Chapter 8: Motor Circuit Analysis Testing DC Motors 181

 The Commutator 181

 Brush and Commutator Operation. 182

 Seating, Tensioning and Cleaning 184

 Basics of DC Machines for MCA Testing 186

 Common DC Motor Electrical Faults 187

 Armature Testing. 188

 Series Motor Testing 189

 Shunt Motor Testing 190

 Compound Motor Testing 190

 General DC MCA Testing Notes 191

 Chapter 8 Questions 193

Chapter 9: Electrical Signature Analysis Theory 195

 Alternating Current Induction Motors 197

 Induction Motor Troubleshooting Procedure 197

 Induction Motor Troubleshooting Analysis Overview . . . 199

 Power Quality and Electrical Analysis 199

 Rotor Analysis. 202

 AC Motor and Stator Analysis 204

 Driven Equipment Evaluation 206

 Belts 206

 Gear Mesh 207



P



Driven Equipment – Blade Pass Frequencies 207

Generator Analysis with ESA 208

DC Electric Motors 208

 DC Motor Testing Procedure 209

 Basic DC Motor Analysis 210

Chapter 9 Questions 212

Chapter 10: Electrical Signature Analysis Pattern
Recognition AC Machines 213

 The Elusive Stator Slots and Rotor Bars 213

 Stator Slots 214

 Rotor Bars 217

 Use of Databases 217

 Alarm Levels 217

 Evaluating Data: Basic Steps for Pattern Recognition. 218

 Common AC Induction Motor Signatures 218

 Unbalance and Misalignment 219

 Gearbox Fault 219

 Classical Rotor Bar Fault 220

 Punch Press: Driven Equipment Effects. 221

 Fan and Belt Faults 221

 Coil Movement 222

 Static Eccentricity 223

 Variable Frequency Drives 223

Chapter 10 Questions 226

Chapter 11: Electrical Signature Analysis Pattern
Recognition DC Machines 227



Alarm Levels 217



Table of Contents

xi

DC Troubleshooting Patterns 227

Considerations in DC Analysis 230

Chapter 11 Questions 234

Chapter 12: Developing an EMD Program 235

 Concepts of the Program 236

 Key Performance Indicators 238

 RCMM Team 239

 Considerations in Selecting Equipment 240

 Defining Motor Management Programs 240

 Company Mission 242

 The RCM-Based Approach for Motor Management 242

 Selecting CBM Equipment 245

Appendix 1: Advanced Transformer Analysis with the
ALL-TEST IV PRO 2000 247

 Single Phase Transformer Testing 247

 Procedure 247

 Test Results 248

 Three Phase Transformer Testing 249

 Procedure 249

 Testing Notes and Limits 250

Appendix 2: Evaluation of Capacitance in Motor
Circuit Analysis Findings 251

Appendix 3: MCA Tables for TTFE Baselines 259

Appendix 4: Determining Testing Frequency 261

Appendix 5: Stator Slot and Rotor Bar Tables 263

Subject Index 365



Developed for electricians, mechanics, students and reliability managers, *Electrical Motor Diagnostics* is an essential working tool for the new and experienced Electrical Motor Diagnostics professional. The Second Edition of *Electrical Motor Diagnostics* provides the information, case studies, and materials necessary to interpret motor circuit analysis, motor current signature analysis, electrical signature analysis, and other standard testing technologies for AC/DC electric motors, transformers, machine tool motors, synchronous motors, and generators including pass/fail values. Information on the development of a motor management program and the SUCCESS by DESIGN Time to Failure Estimation™ methodology for any technology are covered in detail.

Dr. Penrose is the President of SUCCESS by DESIGN, a reliability and maintenance services consultant and publisher whose clients include General Motors, U. S. Steel, Monsanto and numerous businesses, large and small, worldwide. He has 25 years in the reliability and maintenance industry with experience from the shop floor to academia and manufacturing to military. Dr. Penrose was an adjunct professor of engineering at the University of Illinois at Chicago from 1997–1999 and a Senior Research Engineer at the UIC Energy Resources Center. He is a past Chair of the Chicago Section IEEE, past Vice Chair of the Connecticut Section IEEE, and has held numerous other elected and appointed positions within IEEE as well as membership in the Vibration Institute, Society of Maintenance and Reliability Professionals, International Maintenance Institute, and MENSA. He is well published in trade magazines, is frequently invited to speak at industrial reliability events, and is a member of the National Writers Union (UAW Local 1981). He is a Certified Maintenance and Reliability Professional, NAVAIR and NAVSEA RCM, specialist as well as numerous other industry certifications. Dr. Penrose received both the 2005 and 2006 UAW and GM People Make Quality Happen Award for business improvements through reliability and maintenance best practices of GM's physical assets.



ISBN-13: 978-0-9712450-7-5



9 780971 245075 0149.95

Electrical Motor Diagnostics

2nd Edition

Howard W. Penrose, Ph.D., CMRP